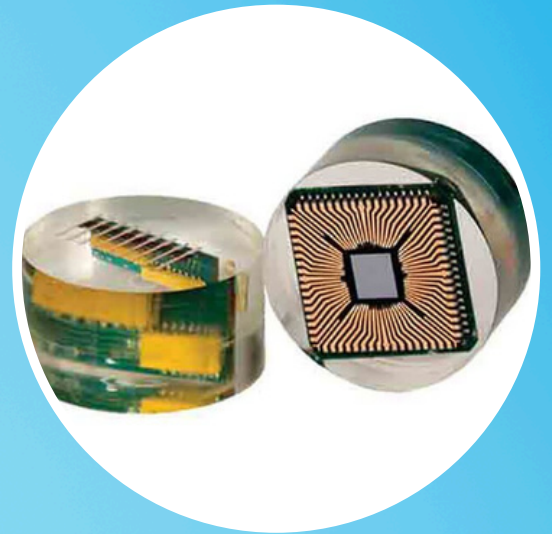




# SIMPLIVAC ADVANCED VACUUM SYSTEM



- +212 660-221468
- [www.B2tsupport.com](http://www.B2tsupport.com)
- [info@b2t-support.com](mailto:info@b2t-support.com)



# SimpliVac

## Advanced vacuum system cold coating

The SimpliVac Vacuum Impregnation System is an advanced system designed to enhance your epoxy mounting process by impregnating samples under vacuum to optimize penetration of all porosity and other cracks. With the ability for the user to intuitively program the time and number of vacuum cycles to be performed during mounting, this machine effortlessly produces superior quality coatings. In addition, its spacious chamber allows for processing large or numerous samples in one cycle. For unmatched results, use it with Buehler epoxy mounting resins.

Tension	100-240 V AC, 50-60 Hz, single phase
Air inlet required	0.6 MPa
Machine dimensions	325mm x 488mm x 472mm (H x D x W)
Weight	23kg

### Easy to use:

Programmable recording methods reduce setup time and ensure consistency between cycles, even for complex applications

The intuitive touch interface allows you to control settings naturally

The external flywheel facilitates the rotation of the worktop inside the chamber, with a system to prevent sudden movements

Ability to lock the system to prevent any modification of saved methods and/or cycle parameters

Bowl and tray guards simplify the cleaning process

### High throughput and capacity for large samples:

The 240 mm (9.4 in) bowl diameter allows for processing large or numerous samples

The spacious size of the bowl easily accommodates large samples.



+212 660-221468

[www.B2tsupport.com](http://www.B2tsupport.com)

[info@b2t-support.com](mailto:info@b2t-support.com)

## Easy Resin Injection

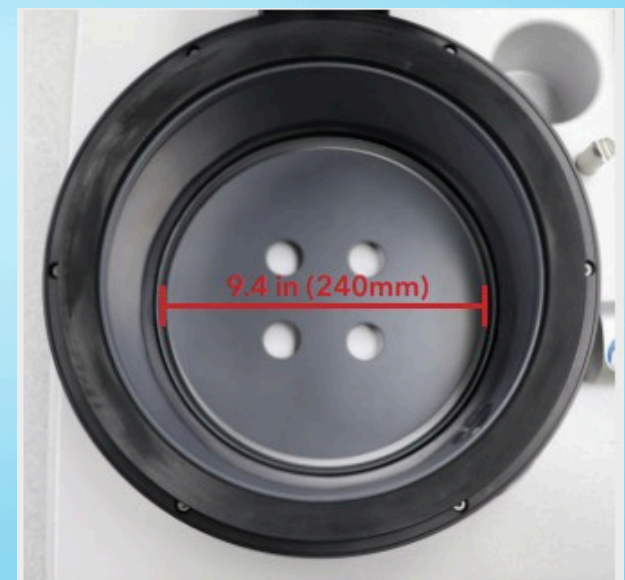
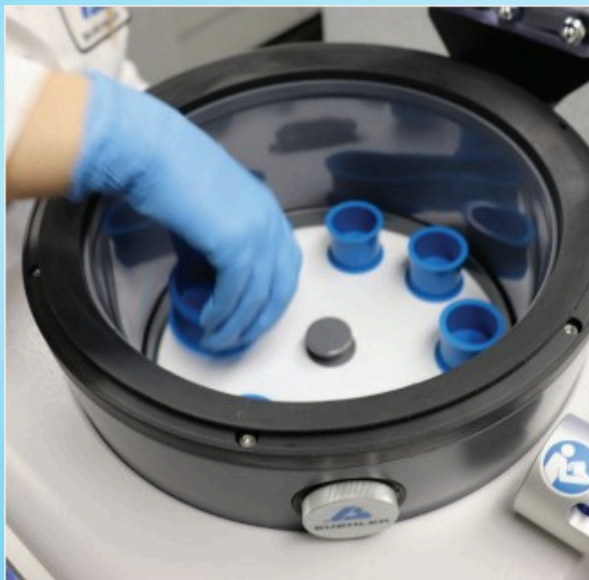
Use our interchangeable tubes to ensure the injection of epoxy resin. Thanks to a handwheel, the plate rotates in both directions and is equipped with a movement stabilization system that prevents sudden rotations, which could cause resin spills or displacement of the samples in the embedding mold. This facilitates the movement of samples for vacuum impregnation, in addition to providing excellent visibility in the chamber, contributing to quick and precise positioning.



## Spacious Chamber

Use our interchangeable tubes to ensure the injection of epoxy resin. Thanks to a handwheel, the plate rotates in both directions and is equipped with a movement stabilization system that prevents sudden rotations, which could cause resin spills or displacement of the samples in the embedding mold. This facilitates the movement of samples for vacuum impregnation, in addition to providing excellent visibility in the chamber, contributing to quick and precise positioning.

Take advantage of increased efficiency and process a maximum number of samples thanks to the more spacious chamber. The included rotating plate also allows for the embedding of large or irregularly shaped parts.



# SimpliMet 4000

## Hot coating machine

The SimpliMet 4000 hot mix asphalt plant is a rugged machine designed to produce high-quality asphalt mixes from 25 to 50 mm in metric (or 1 to 1.5 inches). This machine emphasizes ease of use and fast cycle times to keep your process moving. Additionally, the Duplex spacer allows users to produce two asphalt mixes in a single cycle. For unmatched results, use your asphalt plant with Buehler hot mix resins.



Référence	Moule
20-1011-5001	Moule de 1 pouce
20-1011-5025	Moule de 25 mm
20-1011-5125	Moule de 1,25 pouce
20-1011-5030	Moule de 30 mm

Référence	Moule
20-1011-5150	Moule de 1,5 pouce
20-1011-5040	Moule de 40 mm
20-1011-5050	Moule de 50 mm



+212 660-221468  
[www.B2tsupport.com](http://www.B2tsupport.com)  
[info@b2t-support.com](mailto:info@b2t-support.com)

## SimpliMet 4000

Functioning	Automatic electro-hydraulic
Coating mold sizes	Imperial system: 1 inch, 1.25 inch, 1.5 inch, 2 inch Metric system: 25 mm, 30 mm, 40 mm, 50 mm
<b>Coating parameters</b>	
Pressure	Operating pressure range 1000 to 4400 psi [70 – 300 bar], ±10% Adjustable in 50 psi [5 bar] increments Pre-charge pressure feature applies gradual pressure for delicate samples, 350 psi [24 bar]
Heating time	User selectable duration, from 1 to 20 minutes
Heating temperature	Operating temperature range 50°C to 220°C [120°F – 420°F]
Heating power	1500 W at 115 VAC / 1900 W at 230 VAC
Cooling time	User selectable or Smart Cool function User selectable duration from 1 to 30 minutes Adjustable in 10 second increments Smart Cool intelligent cooling system automatically cools a sample until its temperature reaches 40°C
Thermoplastic function	Automatically sets the correct parameters for thermoplastic resins, such as TransOptic™ resin, and cools the potting medium in a linear and controlled manner
Maximum noise emissions	62 dB maximum at 1 m from the front of the machine, piston in motion (raised/lowered) and mold closing device open
Operating environment	Temperature: 5°C – 40°C [40°F – 104°F] Humidity: 30 – 90%, non-condensing
<b>Electrical characteristics</b>	
Voltage/frequency	85 – 264 VAC, 50 – 60 Hz, single phase
Water intake	Pipe with external diameter of 6 mm [0.25 inch] or 9.525 mm [0.375 inch]
Water outlet	Exhaust: Flexible with internal diameter of 6 mm [0.25 inch] and external diameter of 8.5 mm [0.34 inch] Vent: Flexible with internal diameter of 6 mm [0.25 inch] and external diameter of 12.7 mm [0.5 inch]
Length	660 mm [26.00 inches]
Length from back of machine to front foot	540 mm [21.25 inches]
Width	311 mm [12.25 inches]
Height in closed position	498 mm [19.62 inches]
Height in open position	524 mm [20.62 inches]
Weight	54 kg [120 pounds]
Compliance	CE, PSE, RoHS, WEEE

